

# MONTHLY MEMBERSHIP PROGRESS REPORT

District 325 J

Results as of: 7/31/2024

GMT:

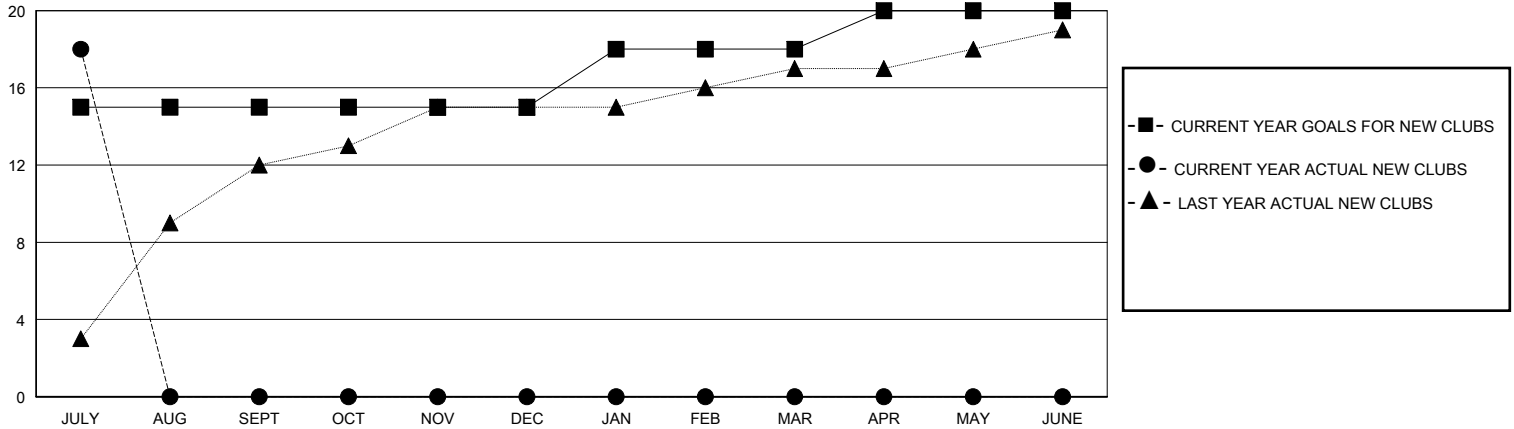
LOCATION NEPAL

GMT CA

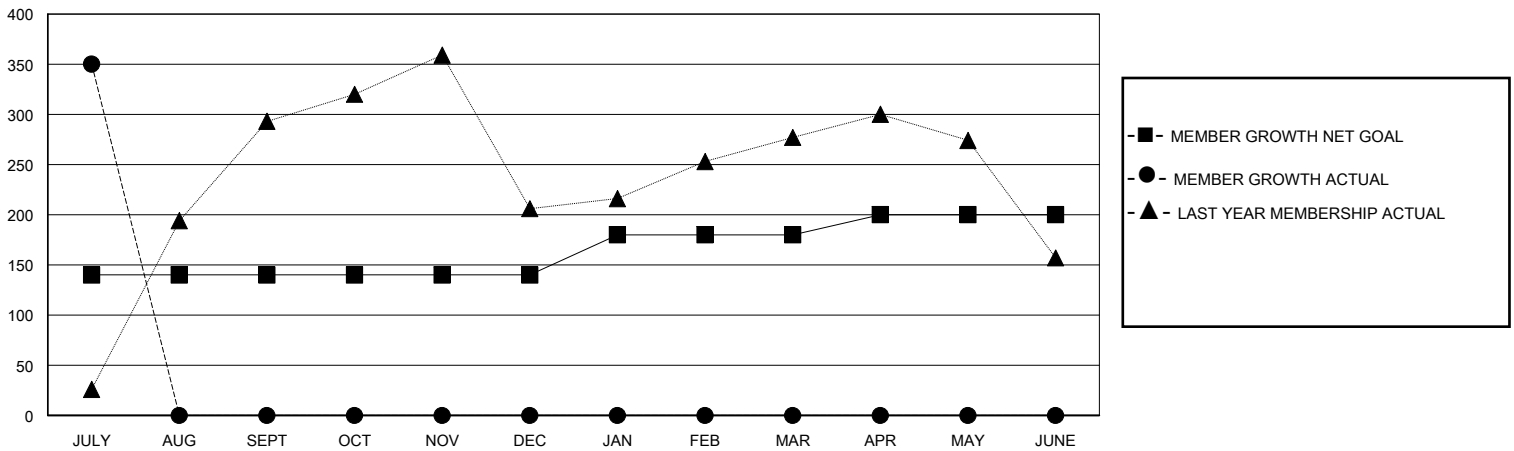
Clubs			
RESULTS FOR 2024-2025			
QUARTER	NEW CLUB GOAL	NEW CLUBS	DROPPED CLUBS
JULY/AUG/SEPT	15	18	0
OCT/NOV/DEC	0	0	0
JAN/FEB/MAR	3	0	0
APR/MAY/JUNE	2	0	0

Members			
RESULTS FOR 2024-2025			
QUARTER	MEMBER GROWTH NET GOAL	MEMBER GROWTH ACTUAL	DROPPED MEMBERS ACTUAL (including transfers)
JULY/AUG/SEPT	140	435	54
OCT/NOV/DEC	0	0	0
JAN/FEB/MAR	40	0	0
APR/MAY/JUNE	20	0	0

GOALS AND ACTUAL NEW CLUBS CUMULATIVE



GOALS AND ACTUAL MEMBERS CUMULATIVE



DROPPED CLUBS: 0

26 CLUBS OF 121 ADDED 1 OR MORE NEW MEMBERS

GENDER DISTRIBUTION

MALE 1,879 (67.57%)  
FEMALE 902 (32.43%)

DROPPED MEMBERS

DECEASED	0
CLUB CANCELLED	0
OTHER	53
<b>TOTAL</b>	<b>53</b>

[CLICK HERE FOR CUMULATIVE MEMBERSHIP DATA](#)

TOTAL FAMILY UNIT MEMBERS	1,660
FAMILY MEMBERS PAYING HALF DUES	1,104